

Shower Niche - 350 x 350 x 92mm Prefabricated Wall Bathroom Renovation

RRP: \$99.95

Remodelling a shower or building a new one? Consider one of our prefabricated shower niches. Designed to display and store bath accessories, these shower niches are great not only for showers, but also for bathrooms and wet rooms as well.

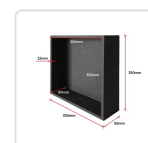
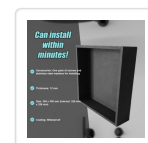
Constructed with a core of high-density polystyrene and a waterproof, liquid-applied sealant, this niche gives you a waterproof, ready-made substrate. Easy to install and ready to tile within minutes of installation, these niches provide you with a versatile bathroom solution that we guarantee will never degrade, leak, or rot.

Features:

- **Tile-ready surface:** This shower wall niche comes ready to install—an ideal base on which you can install tile, decorative plaster, synthetic renders, and other applications.
- **Waterproof:** Extremely water-resistant, this shower wall niche is perfect for areas prone to moisture or even immersed surfaces—showers, of course, but also bath surrounds, wet rooms, balconies, patios, garden water features, and external walls.
- **Lightweight:** The wall niche is light, easy to carry and manoeuvre, making each installation an easy task.
- **Suitable for exterior and interior use:** With its waterproof surface and high degree of insulation, you can install the niche wherever you need a durable, waterproof niche—inside or out.
- **High compressive strength:** With a compressive strength rate of 300k/Pa (30 tonnes/m²), the bond between the reinforcing fibreglass mesh and the cement mortar will stand up under even the toughest conditions.
- **Easy to cut:** Just a fine saw or a sharp Stanley knife is all you need to cut the material in this wall/shower niche.
- **Environmentally friendly:** HCFC- and CFC-free.
- **Plaster- and render-ready surface:** With a rigid foam core with fibreglass mesh reinforcement on both sides topped with polymerised cementitious mortar, this wall niche is ready for render, tile adhesive, or plaster.

Specifications:

- Pre-formed
- Tile-ready
- Can install within minutes
- Install horizontally or vertically
- **Accessories:** One pack of screws and stainless steel washers for installing
- **Size:** 350 x 350 mm (internal: 326 mm x 326 mm)
- **Internal depth:** 80 mm, +/- 2 mm
- **External depth:** 92 mm, +/-2 mm)
- **Thickness:** 12 mm
- **Colour:** Black
- **Coating:** Waterproof





Serrano Australia

Attributes:

- Size: 350 x 350 x 92mm